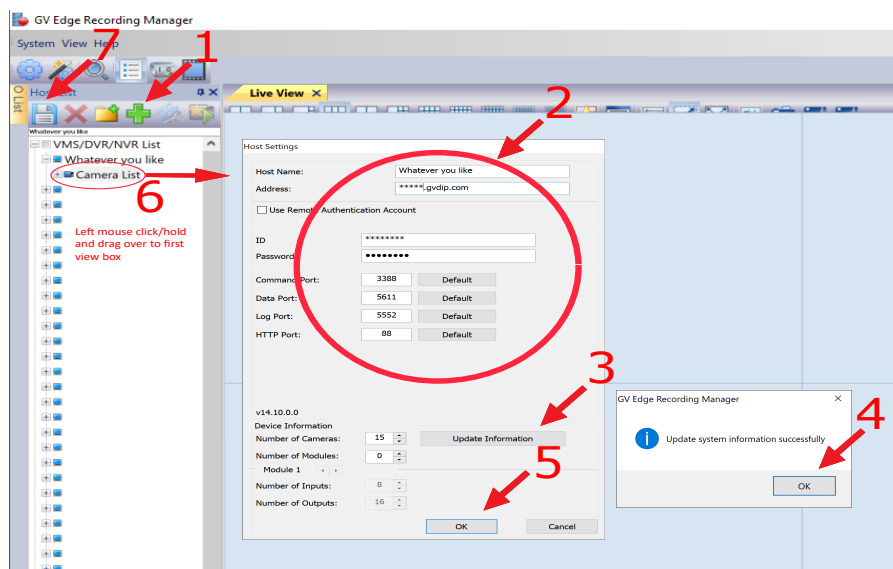
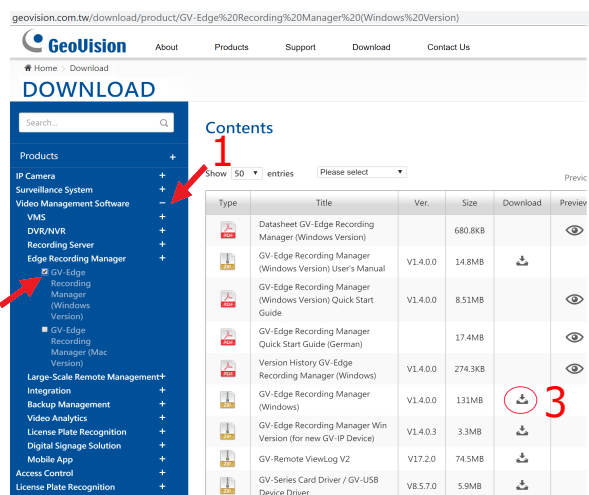

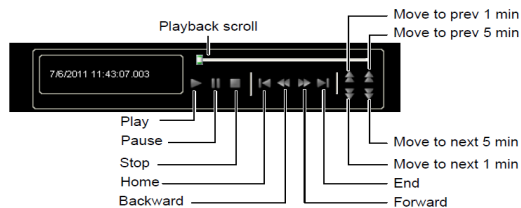
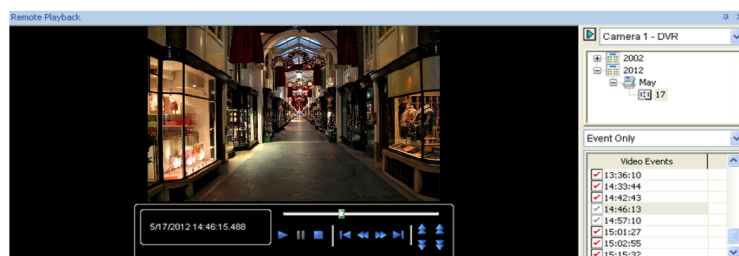
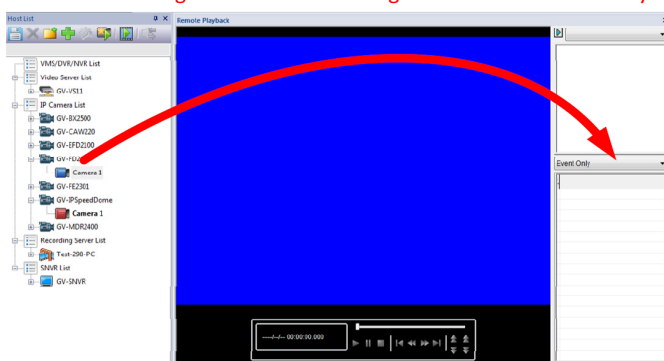


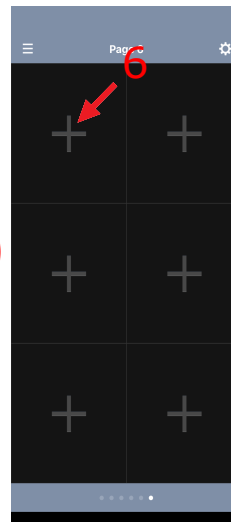
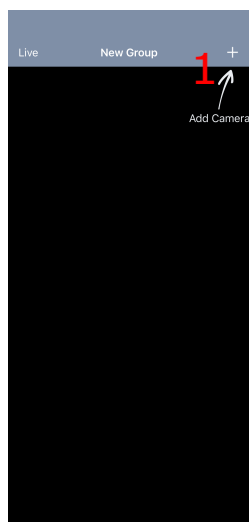
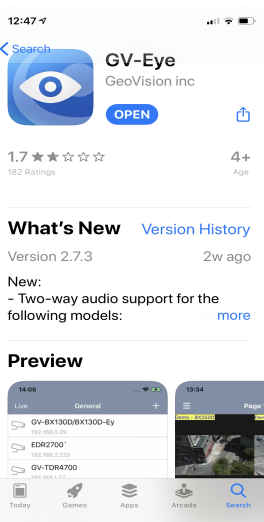
# GV Edge Recording Manger (Live View and Playback on PC)



Click the Remote Playback button  on the main window and drag a camera from the Host List (Figure 1-3) to the Video Event List of the Remote Playback window. For example: **OR Right Click over Live Image and select "Remote Playback"**



## Mobile App:



Select white "+" camera list will appear Select camera to display in that location.

Once cameras are added click on individual cameras to go full screen. Select playback icon on bottom right to play back footage. Select up to 5 events at a time.